



Instruction Manual

PL12-1019EN

06/18/2019

19P & 19T Series

Pistol Grip Stall Screwdriver



19P Series



19T Series

For additional product information visit our website at <http://www.ClecoTools.com>

For this Instruction Manual

This Instruction Manual is the Original Instruction Manual intended for all persons who will operate and maintain these tools.

This Instruction Manual

- provides important notes for the safe and efficient use of these tools.
- describes the function and operation of the 19P and 19T series tools.
- serves as a reference guide for technical data, service intervals and spare parts ordering.
- provides information on optional equipment.

Identification text:

19P / 19T represents all models of the pistol grip pneumatic screwdrivers as described in this manual



indicates a required action



indicates a list

<..>

indicates a reference number from the exploded parts drawings

Arial

indicates an important feature or instruction written in **Arial Bold**

Identification graphic:



indicates a directional movement



indicates a function or force

Copyright protection:

Apex Tool Group, LLC reserves the right to modify, supplement or improve this document or the product without prior notice. This document may not be reproduced in any way, shape or form, in full or parts thereof, or copied to another natural or machine readable language or to a data carrier, whether electronic, mechanical, optical or otherwise without the express permission of Apex Tool Group, LLC.

| | 19 | X | T | S | XX | Q |
|---------------------------------|----|---|---|---|----|---|
| Tool Series | | | | | | |
| 19 | | | | | | |
| Handle | | | | | | |
| P = Pistol Grip P-Handle | | | | | | |
| T = Pistol Grip T-Handle | | | | | | |
| Tool Type | | | | | | |
| T = Trigger | | | | | | |
| Torque Control | | | | | | |
| S = Stall | | | | | | |
| Maximum Torque | | | | | | |
| 02 = 2.1 Nm | | | | | | |
| 03 = 3.1 Nm | | | | | | |
| 04 = 4.5 Nm | | | | | | |
| 05 = 5.1 Nm | | | | | | |
| Output Drive | | | | | | |
| Q = Quick Change Chuck | | | | | | |

| | | |
|----------|---|-----------|
| 1 | Safety | 6 |
| 1.1 | Warning and notes..... | 6 |
| 1.2 | Basic requirements for safe working practices | 7 |
| 1.3 | Operator training..... | 7 |
| 1.4 | Personal protective equipment | 7 |
| 1.5 | Designated use..... | 8 |
| 1.6 | Codes and standards | 8 |
| 1.7 | Noise and vibration..... | 8 |
| 2 | Scope of supply, transport and storage | 9 |
| 2.1 | Items supplied | 9 |
| 2.2 | Transport | 9 |
| 2.3 | Storage | 9 |
| 3 | Product description | 10 |
| 3.1 | General description | 10 |
| 3.2 | Operation and functional elements..... | 10 |
| 4 | Accessories | 11 |
| 5 | Before initial operation | 12 |
| 5.1 | Ambient conditions | 12 |
| 5.2 | Air supply..... | 12 |
| 5.3 | Connecting the air supply to the tool | 12 |
| 5.4 | Tool set up | 13 |
| 6 | First operation | 14 |
| 6.1 | Putting into use..... | 14 |
| 7 | Troubleshooting | 15 |
| 8 | Maintenance | 16 |
| 8.1 | Service schedule | 16 |
| 8.1.1 | Calculating a customer specific maintenance plan..... | 17 |
| 8.2 | Lubricants | 17 |
| 9 | Repair instructions | 19 |
| 9.1 | Motor disassembly and reassembly | 19 |

| | | |
|-----------|-------------------------------------|-----------|
| 10 | Spare parts | |
| 10.1 | 19P series screwdriver | 20 |
| 10.2 | 19T series screwdriver | 22 |
| 10.3 | Motor assembly | 24 |
| 10.4 | 301967PT Gearing assembly | 26 |
| 10.5 | 301086 Gearing assembly..... | 26 |
| 10.6 | 301968PT Gearing assembly | 28 |
| 10.7 | 301969PT Gearing assembly | 28 |
| 10.8 | 301122 Spindle assembly..... | 30 |
| 11 | Technical data | 32 |
| 11.1 | 19PTS and 19TTS Specifications..... | 32 |
| 12 | Service | 33 |
| 12.1 | Replacement parts | 33 |
| 12.2 | Tool repairs | 33 |
| 12.3 | Warranty repairs | 33 |
| 13 | Disposal | 34 |

1 Safety

1.1 Warnings and notes

Warning notes are identified by a signal word and a pictogram.

- The signal word indicates the severity and probability of the impending danger.
- The pictogram indicates the type of danger.

WARNING!



WARNING identifies a potentially **hazardous** situation which, if not avoided, may result in serious injury.

CAUTION!



CAUTION identifies a potentially **hazardous** situation which, if not avoided, may result in minor or moderate injury or property and environmental damage.

NOTE



NOTE identifies general information which may include application tips or useful information but no hazardous situations.



Important information that must be read and understood by all personnel installing, operating or maintaining this equipment.

1.2 Basic requirements for safe working practices



All personnel involved with the installation, operation or maintenance of these tools must read and understand all safety instructions contained in this manual. Failure to comply with these instructions could result in serious injury or property damage.

These safety instructions are not intended to be all inclusive. Study and comply with all applicable National, State and Local regulations.

CAUTION!



Work Area:

- Ensure there is enough space in the work area.
- Keep the work area clean.
- Keep the work area well ventilated.

Personnel Safety:

- Inspect the air supply hoses and fittings. Do not use damaged, frayed or deteriorated hoses.
- Make sure the air supply hose is securely attached to the tool.
- Ensure a secure standing position and maintain balance.
- Make sure the throttle is positioned relative to the head so the throttle will not become wedged against an adjacent object in the ON position due to torque reaction.
- If the tool is to be reversed, locate the throttle in a neutral position to prevent entrapment.
- Keep the tool clean and dry to provide the best possible grip.
- Firmly grasp the handle of the 19P/19T and apply the bit to the application before starting.
- Be prepared for high short-term reaction torques.

Safety working with and around fastening tools:

- Use only power tool sockets and bits available from Apex Tool Group.
 - Inspect socket or bit for visible damage and cracks. Replace damaged items immediately.
 - Disconnect the air supply before installing or replacing the socket or bit.
 - Do not attach the socket or bit at a slant.
 - Make sure the socket or bit is fully assembled on the drive and locked in position.
-

1.3 Operator training

All personnel must be properly trained before operating the 19P/19T tools. The 19P/19T tools are to be repaired by fully trained personnel only.

1.4 Personal protective equipment

When working



- Wear eye protection to protect against flying metal splinters.
- Wear hearing protection

Danger of injury by being caught by moving equipment.



- Wear a hairnet
- Wear close fitting clothing
- Do not wear jewelry

1.5 Designated use

The 19P/19T are designed exclusively for fastening and releasing threaded fasteners.

The 19P/19T series screwdrivers are not equipped with a clutch. The output spindle is coupled to the last stage of gearing. Torque output from a stall tool may be controlled within fairly reasonable limits with an air pressure regulator.

- Do not modify the 19P/19T, any guard or accessory.
- Use only with accessory parts which are approved by the manufacturer.
- Do not use as a hammer, pry-bar or any other improper usage.

1.6 Codes and standards

It is mandatory that all national, state and local codes and standards be followed.

1.7 Noise and vibration

Noise level ≤ 79 dB(A) free speed (without load) according to ISO 12100: 2011

Vibration values < 2.5 m/s² according to ISO 12100: 2011

2 Scope of supply, transport and storage

2.1 Items supplied

Check shipment for transit damage and ensure that all items have been supplied:

- 1 19P or 19T
- 1 PL12-1019EN instruction manual
- 1 Declaration of Conformity
- 1 Lubrication sheet
- 1 Warranty statement

2.2 Transport

Transport and store the 19P/19T in the original packaging. The packaging is recyclable.

2.3 Storage

For short term storage (less than 2 hours) and protection against damage:

- ➔ Place the 19P/19T in a location on the workbench to avoid accidental depression of the trigger.
or
- ➔ Suspend the 19P/19T from a suitable balancer or tool positioner.

For storage longer than 2 hours:

- ➔ Disconnect the air supply from the 19P/19T

| Object | Time Period | Storage Temperature |
|-------------------------|--------------|--------------------------------|
| 19PT without air supply | No guideline | -13°F to 104°F (-25°C to 40°C) |
| 19TT without air supply | No guideline | -13°F to 104°F (-25°C to 40°C) |

3 Product description

3.1 General description

- Pistol grip or “T” handle pneumatic powered screwdriver
- Trigger actuated
- Clockwise/counterclockwise rotation
- Stall type tool (no clutch)
- Low vibration level

3.2 Operation and functional elements

This section describes the operational and functional elements of the 19P/19T.



| Ref. | Description |
|------|---|
| 1 | Air Inlet |
| 2 | Reversing Lever |
| 3 | Trigger |
| 4 | Two Interchangeable soft-touch grip sizes |
| 5 | Motor and Gearing |
| 6 | Quick Change Chuck |

4 Accessories



Suspension Bail
Part Number: 931962



Exhaust Overhose
Part Number: 207107 (19T)



Small Handle
Part Number: 207595PT

5 Before initial operation

5.1 Ambient conditions

Ambient temperature: 41°F (5°C) to a maximum of 104°F (40°C)

Acceptable relative humidity: 25% to 90%, non-condensing

5.2 Air supply

| Parameter | Description |
|------------------------|---|
| Air Hose | Minimum inside diameter: 3/16" (4,7 mm) Maximum length: 16.4' (5 m) |
| Working pressure range | 58 to 101.5 psi (400 to 700 kPa) Recommended: 90 psi (620 kPa) |
| Compressed air | Air quality according to ISO 8573-1, quality class 2.4.3 The compressed air must be clean and dry. |

NOTE



To attain consistent results, maintain a constant working pressure using a suitable air line unit consisting of a filter, regulator and lubricator.

- The inside diameter of the air hose must be free of residue, clean if necessary.
- Spray a few drops of light air tool oil into the air inlet adapter.
- Adjust the lubricator to a minimum setting to reduce the amount of excess oil in the exhaust air.

Oil identification

| Part No. | Packaged | Designation | Vendor |
|----------|--------------------------|-------------------------|----------------------|
| 540397 | 1 Quart (0.94 liter) | Airlube 10W/NR-420LB DR | Fuchs Lubricants Co. |
| 533485 | 1 US Gallon (3.78 liter) | Airlube 10W/NR-420LB DR | Fuchs Lubricants Co. |

5.3 Connecting the air supply to the tool

WARNING!



The air hose can disconnect from the tool by itself and whip around uncontrollably.

- Turn off the compressed air before connecting to the tool.
- Securely connect the air hose to the tool.
- Turn on the compressed air.

5.4 Tool set up

The tool must be configured for the application.

6 First operation

6.1 Putting into use

- ➔ Make sure the air supply is securely attached and the compressor is turned on.
- ➔ Make sure the reverse lever is in the correct position.
- ➔ Place the socket or bit on the application and depress the trigger to start the rundown.
- ➔ When the rundown is complete, release the trigger.
- ➔ Remove the tool from the application.

7 Troubleshooting

| Malfunction | Possible causes | Remedy |
|---------------------------|--|--|
| Tool does not start | No or low air pressure | → Make sure there is adequate air pressure at the tool air inlet |
| | Reversing lever out of position | → Make sure the reversing lever is in the clockwise or counterclockwise position |
| | Broken gears | → Tool disassembly required (parts replacement) |
| Tool does not shut off | Working pressure < 58 psi (400 kPa) | → Increase the working air pressure |
| Tool loses power | Reduced air pressure | → Check air supply line for any obstructions |
| | Lack of lubrication | → Check the air line lubricator to make sure it is full of lubricant and is working properly |
| | Motor exhaust air is obstructed | → Clean or replace bronze mufflers |
| | Swollen rotor blades from excessive moisture | → Check the air line filter, empty reservoir if necessary |
| | Worn rotor blades | → Tool disassembly required (parts replacement) |
| | Worn gears or bearings | → Tool disassembly required (parts replacement) |
| Air leak at inlet adapter | Loose inlet adapter | → Tighten inlet adapter |
| | Worn o-ring on inlet adapter | → Replace o-ring |

8 Maintenance

CAUTION!



Danger of injury from accidental start up.
Turn off the compressed air before performing any maintenance.

8.1 Service schedule

Only qualified and trained personnel are permitted to perform maintenance on these tools.

Regular maintenance reduces operating faults, repair costs and downtime. In addition to the following service schedule, implement a safety related maintenance program that takes the local regulations for repair and maintenance for all operating phases of the tool into account.

| Maintenance Interval | Rundowns | Designation |
|----------------------|-----------|---|
| Daily | Daily | <ul style="list-style-type: none"> → Visual inspection of air supply hose and connections → Inspect airline filter, regulator and lubricator for proper operation → Check the tool for excessive vibration or unusual noises → Visual inspection of all external components of the tool |
| W1 | 100,000 | <ul style="list-style-type: none"> → Inspect the air hose for damage or wear → inspect the output spindle for damage or wear → Inspect the air inlet adapter for a secure fit → Check the maximum free speed |
| W2 | 500,000 | <ul style="list-style-type: none"> → Check individual parts and replace if necessary → Replace O-rings and seals → Clean bronze mufflers |
| W3 | 1,000,000 | <ul style="list-style-type: none"> → Check individual parts and replace if necessary → Throttle valve → Motor → Gearing → Quick change chuck |

This maintenance schedule uses values that are valid for most applications. For a specific maintenance interval, refer to 8.1.1 Calculating a customer-specific maintenance plan.

8.1.1 Calculating a customer specific maintenance plan

A service interval W(1, 2, 3) depends on the following factors:

| Factor | Value assumed in "Service Schedule" | Description |
|-----------|--|--|
| V | V1 = 100,000 V2 = 500,000 V3 = 1,000,000 | Number of rundowns after a maintenance measure is prescribed by Apex Tool Group. |
| T1 | 1.8 seconds | Specific rundown time, measured in life and endurance tests. |
| T2 | 2 seconds | Actual rundown time, depending on the hardness of the joint. |
| S | 1; 2; 3 | Number of shifts per day. |
| VS | 750 | Number of rundowns per shift. |

T2, S and VS are variable factors and can differ depending on the specific application.

Example for service interval W2:



After 500,000 rundowns (V),
a specific rundown time of 1.8 seconds (T1)
with an actual fastening time of 3 seconds (soft joint) and
3 completed shifts per day and 750 rundowns per shift.

$$W(1, 2, 3) = \frac{V \times T1}{T2 \times S \times VS} \qquad W2 = \frac{500000 \times 1.8}{3 \times 3 \times 750} = 133 \text{ (days)}$$

You will need to perform the maintenance indicated as W2 after an operating time of 133 days.)

8.2 Lubricants

For proper function and long service life, use of the correct grease is essential.

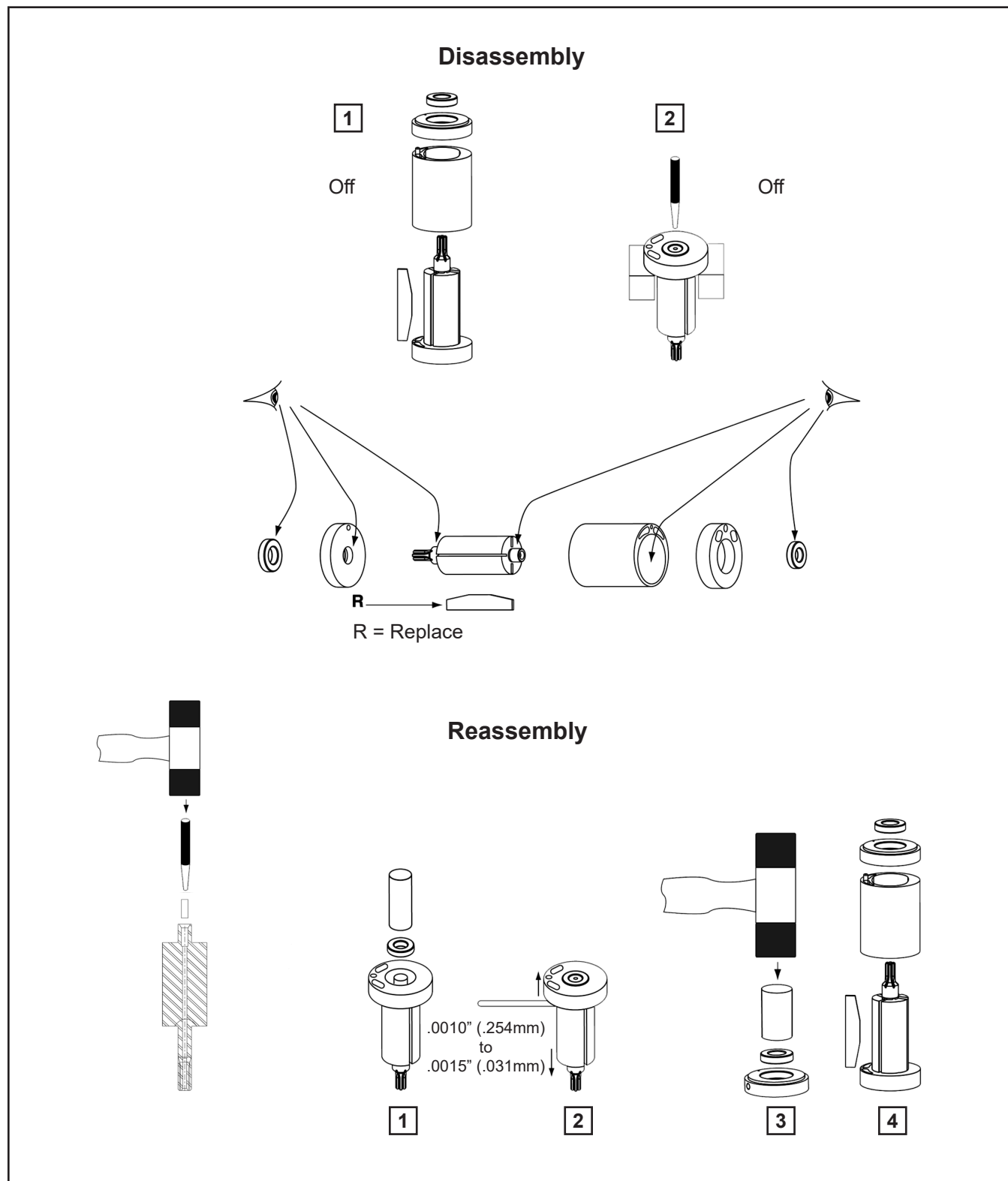
Grease lubricants recommended for this tool.

| Part No. | Packaged | Designation | Vendor |
|----------|------------------|-----------------------|-----------------------|
| 540450 | 18 oz. (0.51 kg) | Black Pearl EP-NLGI-0 | Chevron |
| 540395 | 2 oz. (0.06 kg) | Magnalube-G | Carleton-Stuart Corp. |
| 513156 | 16 oz. (0.45 kg) | Magnalube-G | Carleton-Stuart Corp. |
| 541444 | 2 oz. (0.06 kg) | Rheolube 363AX-1 | Nye Lubricants, Inc. |
| 541445 | 16 oz. (0.45 kg) | Rheolube 363AX-1 | Nye Lubricants, Inc. |

Blank Page

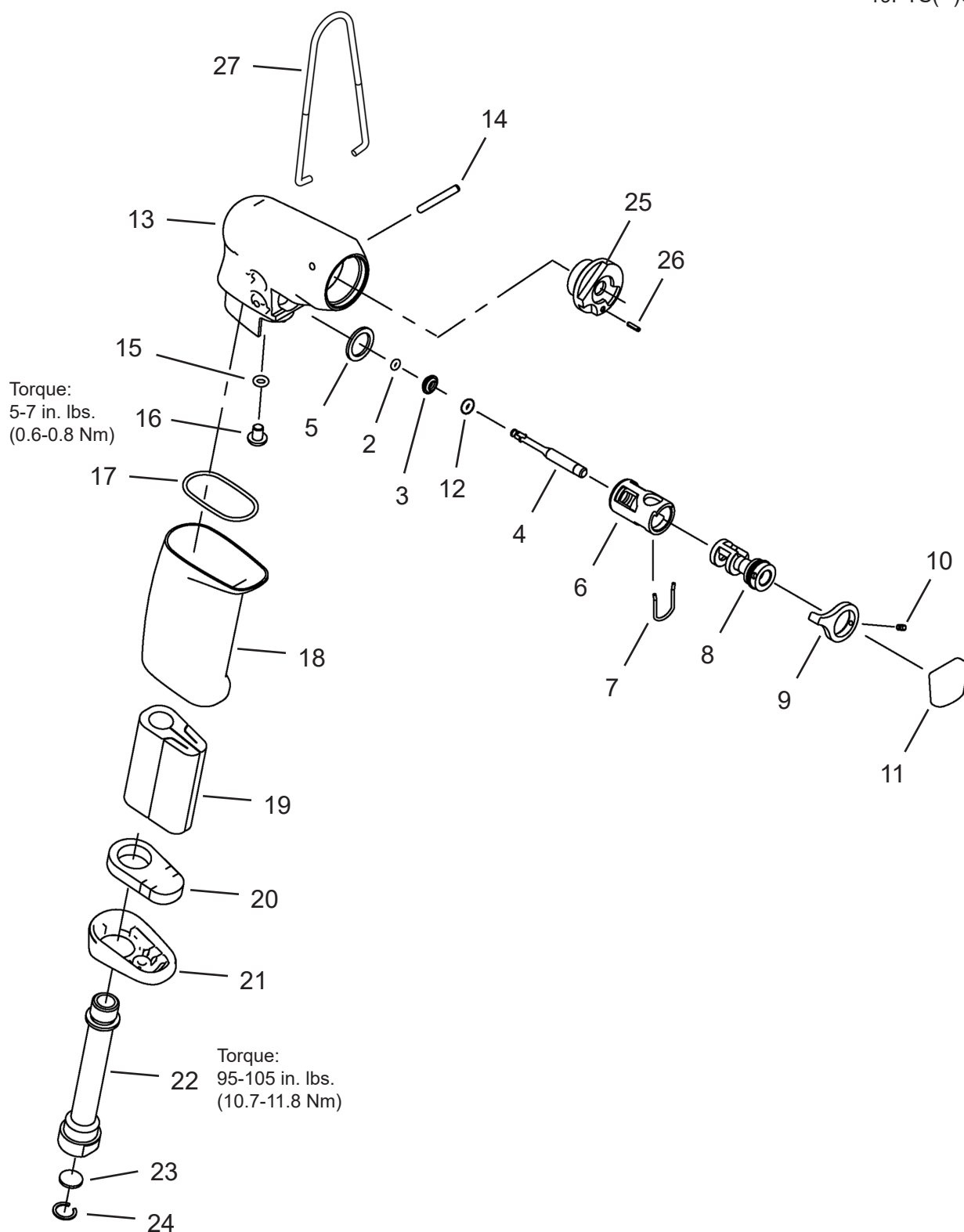
9 Repair instructions

9.1 Motor disassembly and reassembly



10.1 19P Series Screwdriver

Models
19PTS(--)Q



10.1 19P Series Screwdriver

| Ref | Number | # | X | EN |
|-----|------------|---|---|--|
| | | | | Description |
| 1 | 301963PT | 1 | | Reversing Valve Assembly (includes Ref. 2 thru 12) |
| 2 | 541528 | 1 | 3 | O-Ring |
| 3 | 207611PT | 1 | | Tapered Throttle Valve |
| 4 | 207612PT | 1 | | Valve Stem |
| 5 | 70193900 | 1 | | Washer |
| 6 | 70191800 | 1 | | Reversing Valve Bushing |
| 7 | 80047400 | 1 | 1 | Spring Clip |
| 8 | 207574PT | 1 | | Reversing Valve |
| 9 | 207597PT | 1 | | Reversing Valve Lever |
| 10 | 207598PT | 1 | 2 | Socket Head Set Screw |
| 11 | 1110038 | 1 | 1 | Trigger |
| 12 | 93040033 | 1 | 3 | O-Ring |
| 13 | 207570PT | 1 | | Pistol Grip Housing |
| 14 | 847031 | 1 | 2 | Dowel Pin |
| 15 | 844302 | 1 | 3 | O-Ring |
| 16 | 812962 | 1 | 3 | Screw |
| 17 | 867926 | 1 | 3 | O-Ring |
| 18 | 207601PT | 1 | | Large Pistol Grip Handle (Standard Equipment) |
| | 207595PT * | 1 | | Small Pistol Grip Handle (Option) |
| 19 | 203563 | 1 | 3 | Muffler Pad |
| 20 | 866400PT | 1 | 3 | Muffler |
| 21 | 207587PT | 1 | | Muffler Cap |
| 22 | 207602PT | 1 | | Inlet Adapter - Large Handle (Standard Equipment) |
| | 207588PT * | 1 | | Inlet Adapter - Small Handle (Option) |
| 23 | 905031 * | 1 | 3 | Screen |
| 24 | 905599 * | 1 | 3 | Retaining Ring |
| 25 | 207594PT | 1 | | Valve Manifold (includes Ref. 26) |
| 26 | 847548 | 1 | 2 | Pin |
| 27 | 931962 | 1 | 2 | Suspension Bail |

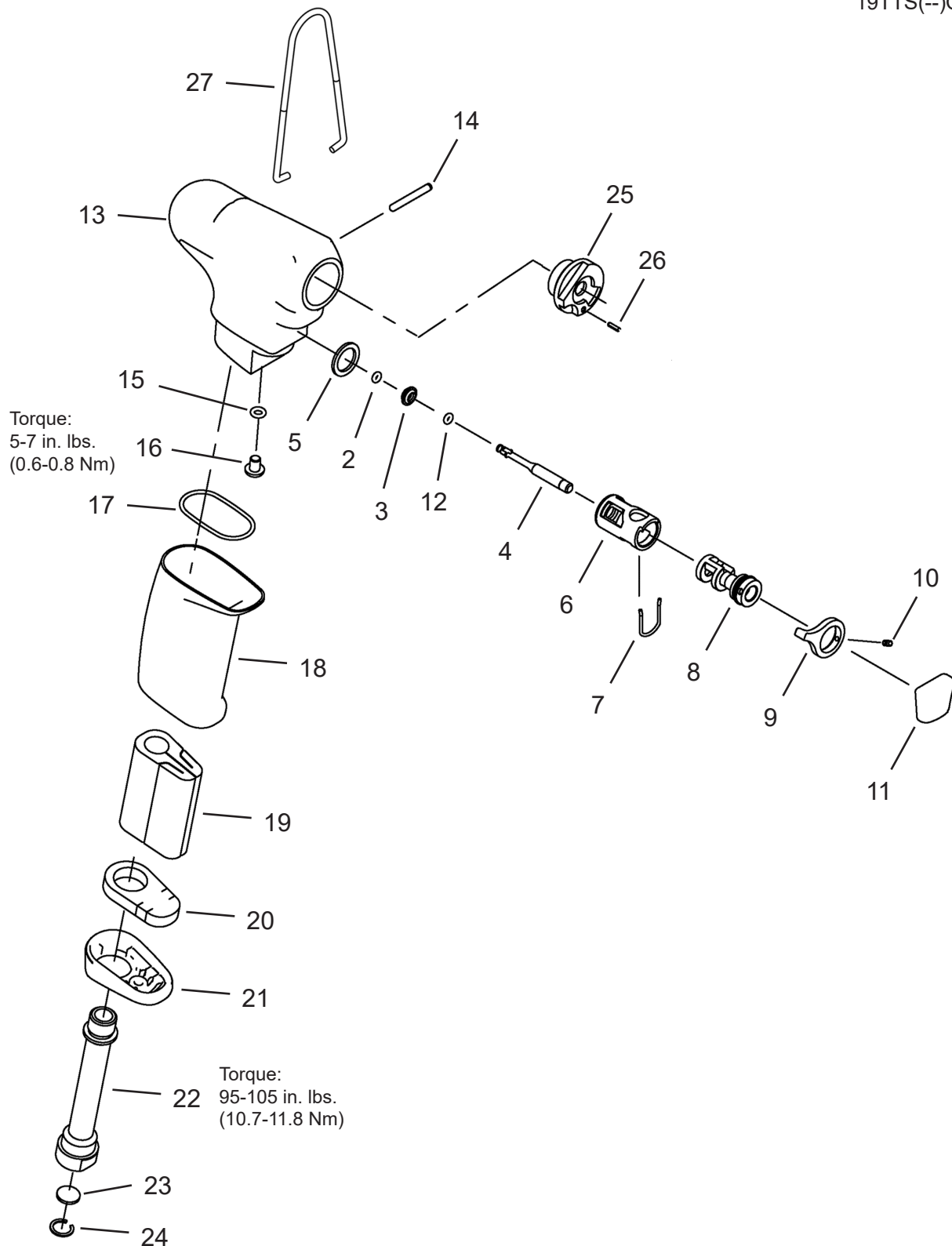
(#) Quantity

(X) Recommended Spare Parts (quantity shown based on 1-5 tools in operation)

* Note: Parts included in 302020PT small Pistol Grip handle kit

10.2 19T Series Screwdriver

Models
19TTS(--)Q



10.2 19T Series Screwdriver

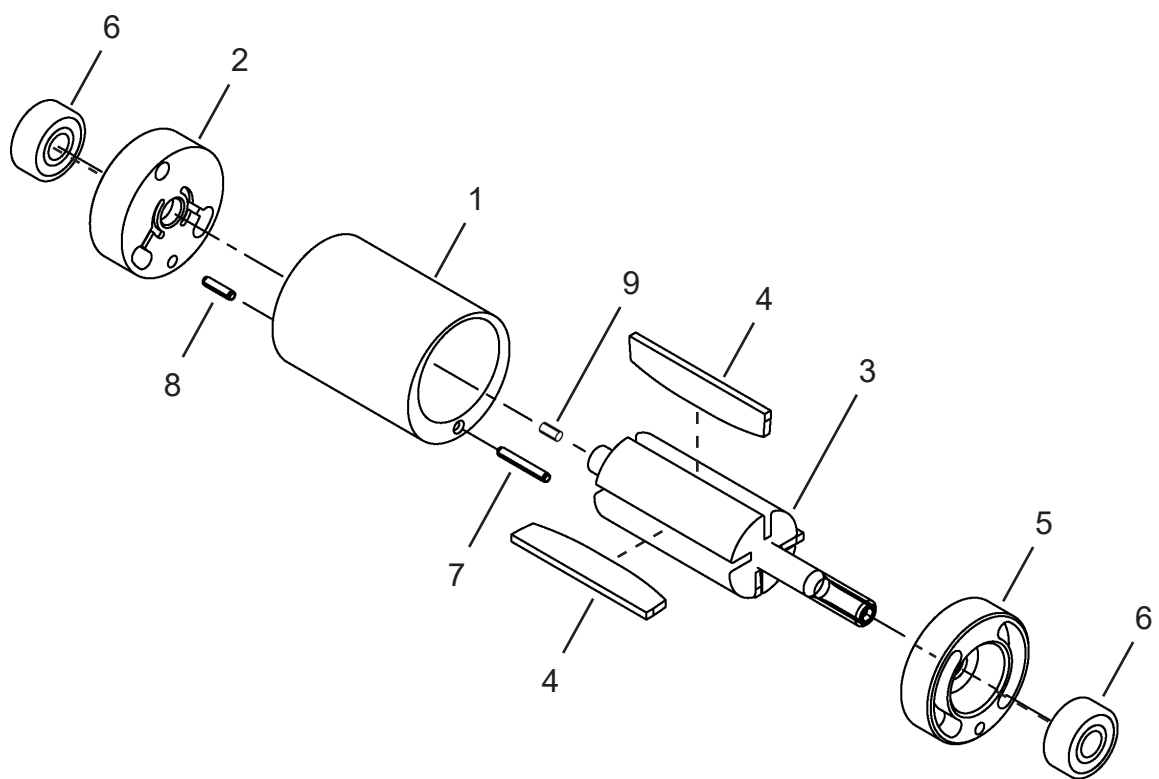
| Ref | Number | # | X | EN |
|-----|------------|---|---|--|
| | | | | Description |
| 1 | 301963PT | 1 | | Reversing Valve Assembly (includes Ref. 2 thru 12) |
| 2 | 541528 | 1 | 3 | O-Ring |
| 3 | 207611PT | 1 | | Tapered Throttle Valve |
| 4 | 207612PT | 1 | | Valve Stem |
| 5 | 70193900 | 1 | | Washer |
| 6 | 70191800 | 1 | | Reversing Valve Bushing |
| 7 | 80047400 | 1 | 1 | Spring Clip |
| 8 | 207574PT | 1 | | Reversing Valve |
| 9 | 207597PT | 1 | | Reversing Valve Lever |
| 10 | 207598PT | 1 | 2 | Socket Head Set Screw |
| 11 | 1110038 | 1 | 1 | Trigger |
| 12 | 93040033 | 1 | 3 | O-Ring |
| 13 | 207572PT | 1 | | Pistol Grip Housing |
| 14 | 847031 | 1 | 2 | Dowel Pin |
| 15 | 844302 | 1 | 3 | O-Ring |
| 16 | 812962 | 1 | 3 | Screw |
| 17 | 867926 | 1 | 3 | O-Ring |
| 18 | 207601PT | 1 | | Large Pistol Grip Handle (Standard Equipment) |
| | 207595PT * | 1 | | Small Pistol Grip Handle (Option) |
| 19 | 203563 | 1 | 3 | Muffler Pad |
| 20 | 866400PT | 1 | 3 | Muffler |
| 21 | 207587PT | 1 | | Muffler Cap |
| 22 | 207602PT | 1 | | Inlet Adapter - Large Handle (Standard Equipment) |
| | 207588PT * | 1 | | Inlet Adapter - Small Handle (Option) |
| 23 | 905031 * | 1 | 3 | Screen |
| 24 | 905599 * | 1 | 3 | Retaining Ring |
| 25 | 207594PT | 1 | | Valve Manifold (includes Ref. 26) |
| 26 | 847548 | 1 | 2 | Pin |
| 27 | 931962 | 1 | 2 | Suspension Bail |

(#) Quantity

(X) Recommended Spare Parts (quantity shown based on 1-5 tools in operation)

* Note: Parts included in 302020PT small Pistol Grip handle kit

10.3 Motor Assembly



10.3 Motor Assembly

| Ref | Number | # | X | EN |
|-----|------------|---|----|---------------------|
| | | | | Description |
| -- | Table 10.3 | 1 | | Motor Assembly |
| 1 | 203504 | 1 | | Cylinder |
| 2 | 205960 | 1 | | Rear Bearing Plate |
| 3 | Table 10.3 | 1 | | Rotor |
| 4 | 203615PT | 4 | 12 | Rotor Blade |
| 5 | 208535PT | 1 | | Front Bearing Plate |
| 6 | 842768 | 2 | 4 | Ball Bearing |
| 7 | 844897 | 1 | 2 | Front Cylinder Pin |
| 8 | 847548 | 1 | 2 | Rear Cylinder Pin |
| 9 | 92570018 | 1 | 2 | Pin |

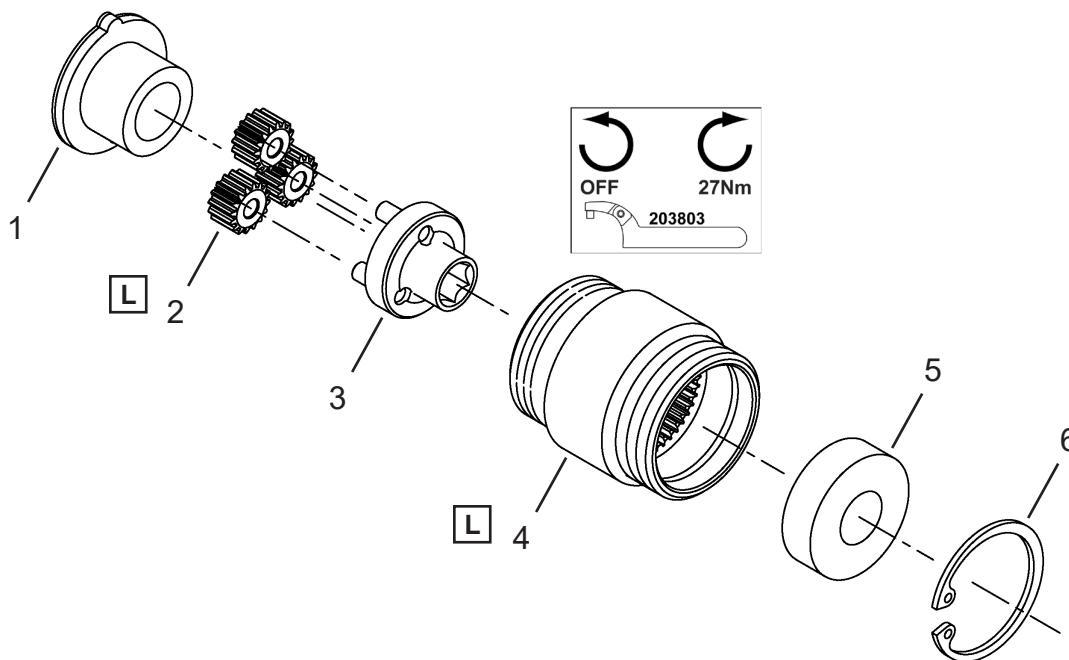
(#) Quantity

Table 10.3

| Ref. | Description | # | 19(-)TS02Q 19(-)TS05Q | # | 19(-)TS03Q | # | 19(-)TS04Q |
|------|----------------|---|--------------------------|---|------------|---|------------|
| -- | Motor Assembly | 1 | 301972PT | 1 | 301973PT | 1 | 301974PT |
| 3 | Rotor | 1 | 203545 | 1 | 203547 | 1 | 203546 |

10.4 301967PT Gearing Assembly

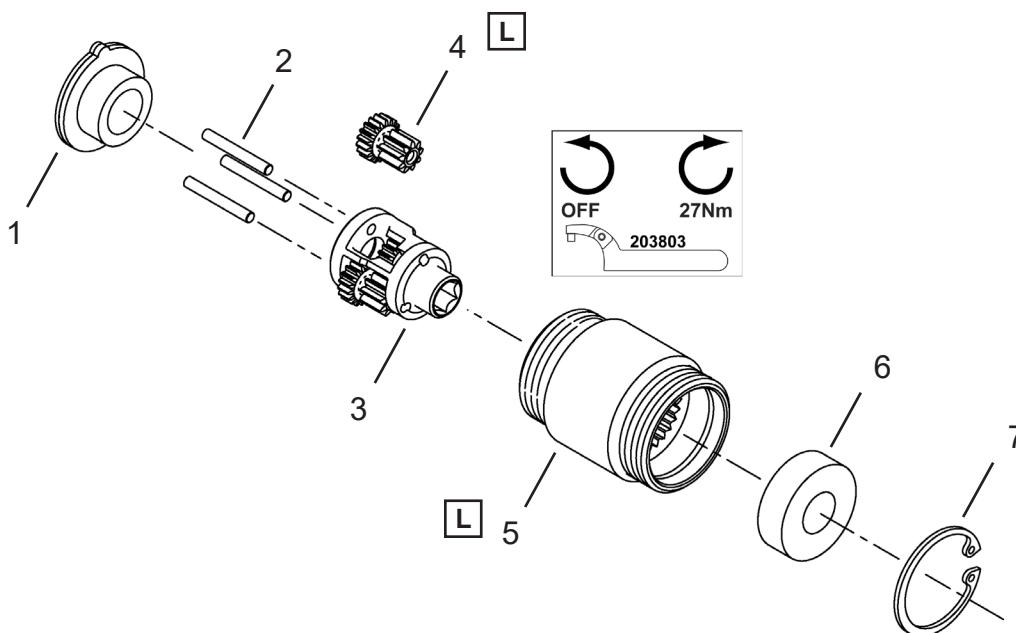
Models
19PTS02Q
19TTS02Q



L Lubricate with 540450 Grease (18 oz. can)

10.5 301086 Gearing Assembly

Models
19PTS03Q
19TTS03Q



L Lubricate with 540450 Grease (18 oz. can)

10.4 301967PT Gearing Assembly

| Ref | Number | # | X | EN |
|-----|----------|---|---|------------------------------|
| | | | | Description |
| -- | 301967PT | 1 | | Gear Case Assembly (6.875:1) |
| 1 | 204136PT | 1 | | End Plate Spacer |
| 2 | 207619PT | 3 | 6 | Idler Gear (16T) |
| 3 | 207620PT | 1 | | Open Spider |
| 4 | 205964 | 1 | | Gear Case |
| 5 | 847595 | 1 | 2 | Ball Bearing |
| 6 | 619017 | 1 | 2 | Retaining Ring |

(#) Quantity

(X) Recommended Spare Parts (quantity shown based on 1-5 tools in operation)

(T) Teeth

10.5 301086 Gearing Assembly

| Ref | Number | # | X | EN |
|-----|--------|---|---|--------------------|
| | | | | Description |
| -- | 301086 | 1 | | Gear Case Assembly |
| 1 | 203646 | 1 | | End Plate Spacer |
| 2 | 833862 | 3 | 6 | Needle Roller |
| 3 | 869155 | 1 | | Spider |
| 4 | 869163 | 3 | 6 | Idler Gear (18/9T) |
| 5 | 205966 | 1 | | Gear Case |
| 6 | 847595 | 1 | 2 | Ball Bearing |
| 7 | 619017 | 1 | 2 | Retaining Ring |

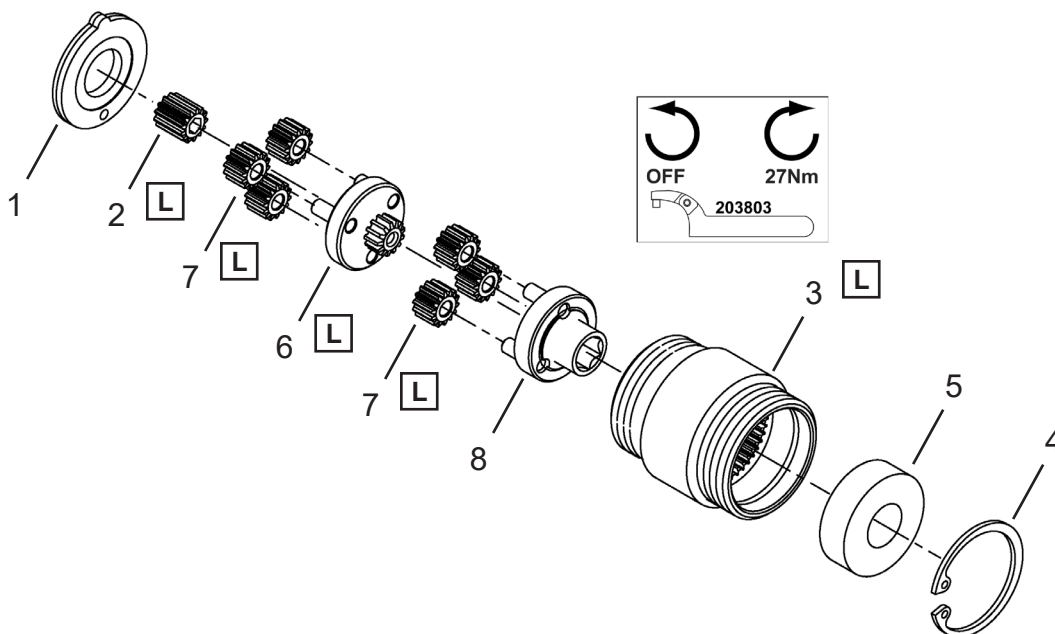
(#) Quantity

(X) Recommended Spare Parts (quantity shown based on 1-5 tools in operation)

(T) Teeth

10.6 301968PT Gearing Assembly

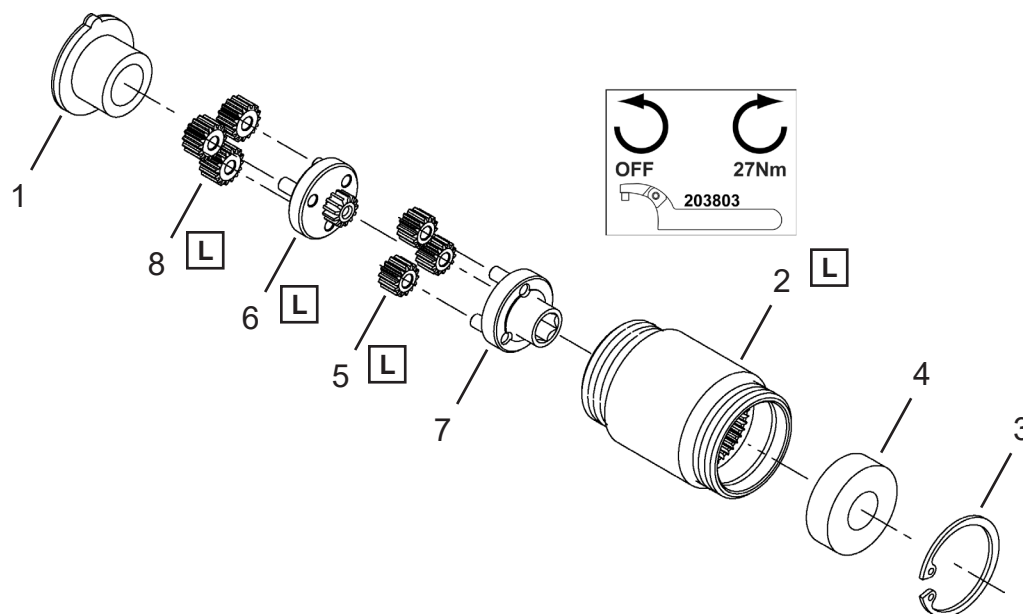
Models
19PTS04Q
19TTS04Q



L Lubricate with 540450 Grease (18 oz. can)

10.7 301969PT Gearing Assembly

Models
19PTS05Q
19TTS05Q



L Lubricate with 540450 Grease (18 oz. can)

10.6 301968PT Gearing Assembly

| Ref | Number | # | X | EN |
|-----|----------|---|----|-------------------------------|
| | | | | Description |
| -- | 301968PT | 1 | | Gear Case Assembly (17.256:1) |
| 1 | 203644PT | 1 | | End Plate Spacer |
| 2 | 203919 | 1 | 2 | Pinion Gear |
| 3 | 205964 | 1 | | Gear Case |
| 4 | 619017 | 1 | 2 | Retaining Ring |
| 5 | 847595 | 1 | 2 | Ball Bearing |
| 6 | 207615PT | 1 | | Open Spider |
| 7 | 207616PT | 6 | 12 | Idler Gear (14T) |
| 8 | 207618PT | 1 | | Open Spider |

(#) Quantity

(X) Recommended Spare Parts (quantity shown based on 1-5 tools in operation)

(T) Teeth

10.7 301969PT Gearing Assembly

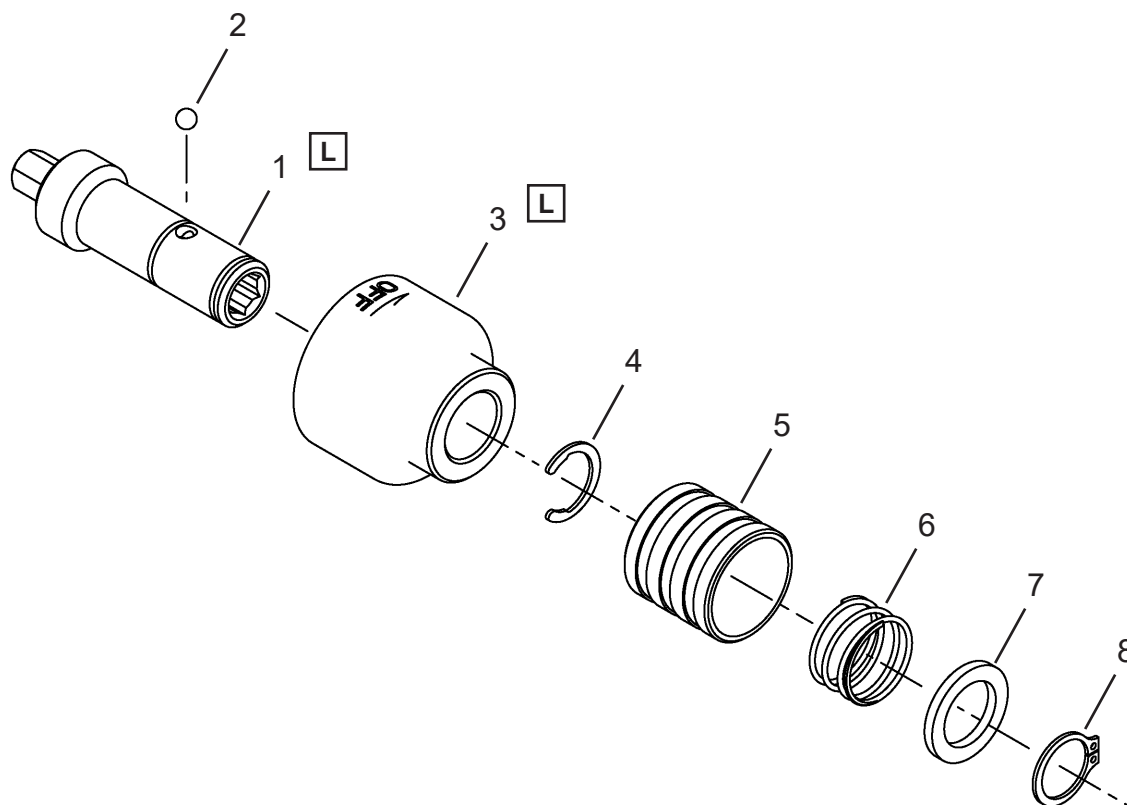
| Ref | Number | # | X | EN |
|-----|----------|---|---|-------------------------------|
| | | | | Description |
| -- | 301969PT | 1 | | Gear Case Assembly (28.484:1) |
| 1 | 204136PT | 1 | | End Plate Spacer |
| 2 | 205963 | 1 | | Gear Case |
| 3 | 619017 | 1 | 2 | Retaining Ring |
| 4 | 847595 | 1 | 2 | Ball Bearing |
| 5 | 207616PT | 3 | 6 | Idler Gear (14T) |
| 6 | 207617PT | 1 | | Open Spider |
| 7 | 207618PT | 1 | | Open Spider |
| 8 | 207619PT | 3 | 6 | Idler Gear (16T) |

(#) Quantity

(X) Recommended Spare Parts (quantity shown based on 1-5 tools in operation)

(T) Teeth

10.8 301122 Spindle Assembly



L Lubricate with 540450 Grease (18 oz. can)

10.8 301122 Spindle Assembly

| Ref | Number | # | X | EN |
|-----|----------|---|---|----------------------------|
| | | | | Description |
| -- | 301122 | 1 | | Stall Spindle Assembly |
| 1 | 202847PT | 1 | | Spindle |
| 2 | 844265 | 1 | 3 | Steel Ball (.125 diameter) |
| 3 | 207104 | 1 | | Spindle Housing |
| 4 | 619524 | 1 | 2 | Retaining Ring |
| 5 | 202833PT | 1 | 1 | Release Collar |
| 6 | 202842PT | 1 | 3 | Spring |
| 7 | 864249 | 1 | 1 | Washer |
| 8 | 833688 | 1 | 2 | Retaining Ring |

(#) Quantity

(X) Recommended Spare Parts (quantity shown based on 1-5 tools in operation)

11 Technical data

11.1 19PTS and 19TTS Specifications

Trigger Start Stall

| Model Number | | Maximum Torque | | Free Speed (rpm) | 19PT Series | | | | 19TT Series | | | |
|--------------|-------------|----------------|-----|---------------------|-------------|-----|--------|-----|-------------|-----|--------|-----|
| | | | | | Length | | Weight | | Length | | Weight | |
| 19PT Series | 19TT Series | in-lb | Nm | | in | mm | lbs | kg | in | mm | lbs | kg |
| 19PTS02Q | 19TTS02Q | 19 | 2.1 | 2800 | 5.9 | 150 | 1.16 | 0.5 | 5.8 | 146 | 1.19 | 0.5 |
| 19PTS03Q | 19TTS03Q | 26 | 2.9 | 1900 | 6.1 | 155 | 1.16 | 0.5 | 6.1 | 155 | 1.19 | 0.5 |
| 19PTS04Q | 19TTS04Q | 40 | 4.5 | 1100 | 5.9 | 150 | 1.16 | 0.5 | 5.8 | 146 | 1.19 | 0.5 |
| 19PTS05Q | 19TTS05Q | 45 | 5.1 | 680 | 6.3 | 160 | 1.36 | 0.6 | 6.3 | 160 | 1.39 | 0.6 |

12 Service

12.1 Replacement parts

NOTE



Use only original Cleco replacement parts. Failure to comply can result in reduced power and increased service requirements. The tool warranty may be voided if replacement parts are not manufactured or approved by Apex Tool Group.

12.2 Tool repairs

Only qualified and trained personnel are to repair this equipment.

12.3 Warranty repairs

All warranty repairs are to be performed by an authorized Apex Tool Group service center. Contact your local representative for assistance with warranty repair claims.

13 Disposal

CAUTION!



Injuries and environmental damage from improper disposal.

Components and auxiliary materials of the tool pose risks to health and the environment.

- ➔ Capture auxiliary materials (oils, greases) when drained and dispose of them properly.
- ➔ Separate the packaging components and dispose of them properly.
- ➔ Comply with all applicable local regulations.





Observe local disposal guidelines for all components of this tool and its packaging.

Blank Page

POWER TOOLS SALES & SERVICE CENTERS

Please note that all locations may not service all products.

Contact the nearest Cleco® Sales & Service Center for the appropriate facility to handle your service requirements.

-  Sales Center
-  Service Center

NORTH AMERICA | SOUTH AMERICA

Detroit, Michigan

Apex Tool Group
2630 Superior Court
Auburn Hills, MI 48236
Phone: +1 (248) 393-5644
Fax: +1 (248) 391-6295

Lexington, South Carolina

Apex Tool Group
670 Industrial Drive
Lexington, SC 29072
Phone: +1 (800) 845-5629
Phone: +1 (919) 387-0099
Fax: +1 (803) 358-7681

Mexico

Apex Tool Group
Vialidad El Pueblito #103
Parque Industrial Querétaro
Querétaro, QRO 76220
Mexico
Phone: +52 (442) 211 3800
Fax: +52 (800) 685 5560

Brazil

Apex Tool Group
Av. Liberdade, 4055
Zona Industrial Iporanga
Sorocaba, São Paulo
CEP# 18087-170
Brazil
Phone: +55 15 3238 3870
Fax: +55 15 3238 3938

EUROPE | MIDDLE EAST | AFRICA

England

Apex Tool Group GmbH
C/O Spline Gauges
Piccadilly, Tamworth
Staffordshire B78 2ER
United Kingdom
Phone: +44 1827 8727 71
Fax: +44 1827 8741 28

France

Apex Tool Group SAS
25 Avenue Maurice Chevalier - ZI
77330 Ozoir-La-Ferrière
France
Phone: +33 1 64 43 22 00
Fax: +33 1 64 43 17 17

Germany

Apex Tool Group GmbH
Industriestraße 1
73463 Westhausen
Germany
Phone: +49 (0) 73 63 81 0
Fax: +49 (0) 73 63 81 222

Hungary

Apex Tool Group
Hungária Kft.
Platánfa u. 2
9027 Győr
Hungary
Phone: +36 96 66 1383
Fax: +36 96 66 1135

ASIA PACIFIC

Australia

Apex Tool Group
519 Nurigong Street, Albury
NSW 2640
Australia
Phone: +61 2 6058 0300

China

Apex Power Tool Trading
(Shanghai) Co., Ltd.
2nd Floor, Area C
177 Bi Bo Road
Pu Dong New Area, Shanghai
China 201203 P.R.C.
Phone: +86 21 60880320
Fax: +86 21 60880298

India

Apex Power Tool India
Private Limited
Gala No. 1, Plot No. 5
S. No. 234, 235 & 245
Indialand Global
Industrial Park
Taluka-Mulsi, Phase I
Hinjawadi, Pune 411057
Maharashtra, India
Phone: +91 020 66761111

Japan

Apex Tool Group Japan
Korin-Kaikan 5F,
3-6-23 Shibakoen, Minato-Ku,
Tokyo 105-0011, JAPAN
Phone: +81-3-6450-1840
Fax: +81-3-6450-1841

Korea

Apex Tool Group Korea
#1503, Hibrand Living Bldg.,
215 Yangjae-dong,
Seocho-gu, Seoul 137-924,
Korea
Phone: +82-2-2155-0250
Fax: +82-2-2155-0252

Cleco®
Production Tools

Apex Tool Group, LLC

Phone: +1 (800) 845-5629
Phone: +1 (919) 387-0099
Fax: +1 (803) 358-7681
www.ClecoTools.com
www.ClecoTools.de